

## Review

## Culturomics of the plant prokaryotic microbiome and the dawn of plant-based culture media – A review



Mohamed S. Sarhan<sup>a</sup>, Mervat A. Hamza<sup>a</sup>, Hanan H. Youssef<sup>a</sup>, Sascha Patz<sup>b</sup>, Matthias Becker<sup>c</sup>, Hend ElSawey<sup>a</sup>, Rahma Nemr<sup>a</sup>, Hassan-Sibroe A. Daanaa<sup>d</sup>, Elhussein F. Mourad<sup>a</sup>, Ahmed T. Morsi<sup>a</sup>, Mohamed R. Abdelfadeel<sup>a</sup>, Mohamed T. Abbas<sup>e</sup>, Mohamed Fayed<sup>a</sup>, Silke Ruppel<sup>f</sup>, Nabil A. Hegazi<sup>a,\*</sup>

<sup>a</sup> Environmental Studies and Research Unit (ESRU), Department of Microbiology, Faculty of Agriculture, Cairo University, Giza 12613, Egypt

<sup>b</sup> Algorithms in Bioinformatics, Center for Bioinformatics, University of Tübingen, Tübingen 72076, Germany

<sup>c</sup> Institute for National and International Plant Health, Julius Kühn-Institute – Federal Research Centre for Cultivated Plants, 38104 Braunschweig, Germany

<sup>d</sup> Department of Genetics, School of Life Science, The Graduate University for Advanced Studies (SOKENDAI), Shizuoka 411-8540, Japan

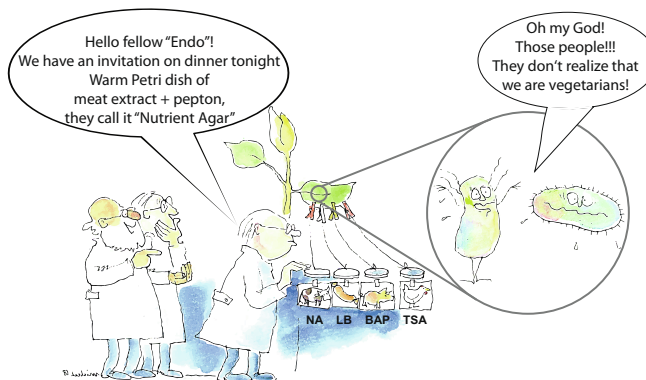
<sup>e</sup> Department of Microbiology, Faculty of Agriculture & Natural Resources, Aswan University, Aswan, Egypt

<sup>f</sup> Leibniz Institute of Vegetable and Ornamental Crops (IGZ), Großbeeren, 14979, Germany

## HIGHLIGHTS

- The plant microbiome culturomics is substantially lagging behind the human microbiome.
- Conventional chemically-synthetic culture media recover < 10% of plant-associated microbiota.
- Plant-based culture media (PCM) are introduced as a novel tool for plant microbiome culturomics.
- PCM extended the microbiota culturability to recover unculturable bacterial taxa.
- Streamlined- and large-genomes conspicuously contribute to the dilemma of unculturability.

## GRAPHICAL ABSTRACT



## ARTICLE INFO

## Article history:

Received 18 January 2019

Revised 11 April 2019

Accepted 12 April 2019

Available online 19 April 2019

## Keywords:

Plant microbiome

Metagenomics

Plant-based culture media

Culturomics

Unculturable bacteria

Candidate Phyla Radiation (CPR)

## ABSTRACT

Improving cultivability of a wider range of bacterial and archaeal community members, living natively in natural environments and within plants, is a prerequisite to better understanding plant-microbiota interactions and their functions in such very complex systems. Sequencing, assembling, and annotation of pure microbial strain genomes provide higher quality data compared to environmental metagenome analyses, and can substantially improve gene and protein database information. Despite the comprehensive knowledge which already was gained using metagenomic and metatranscriptomic methods, there still exists a big gap in understanding *in vivo* microbial gene functioning *in planta*, since many differentially expressed genes or gene families are not yet annotated. Here, the progress in culturing procedures for plant microbiota depending on plant-based culture media, and their proficiency in obtaining single prokaryotic isolates of novel and rapidly increasing candidate phyla are reviewed. As well, the great success of culturomics of the human microbiota is considered with the main objective of encouraging microbiologists to continue minimizing the gap between the microbial richness in nature and the number of species in culture, for the benefit of both basic and applied microbiology. The clear message to fellow

Peer review under responsibility of Cairo University.

\* Corresponding author.

E-mail addresses: [nabil.hegazi@agr.cu.edu.eg](mailto:nabil.hegazi@agr.cu.edu.eg), [hegazinabil8@gmail.com](mailto:hegazinabil8@gmail.com) (N.A. Hegazi).

<https://doi.org/10.1016/j.jare.2019.04.002>

2090-1232/© 2019 The Authors. Published by Elsevier B.V. on behalf of Cairo University.

This is an open access article under the CC BY-NC-ND license (<http://creativecommons.org/licenses/by-nc-nd/4.0/>).

plant microbiologists is to apply plant-tailored culturomic techniques that might open up novel procedures to obtain not-yet-cultured organisms and extend the known plant microbiota repertoire to unprecedented levels.

© 2019 The Authors. Published by Elsevier B.V. on behalf of Cairo University. This is an open access article under the CC BY-NC-ND license (<http://creativecommons.org/licenses/by-nc-nd/4.0/>).

## The birth and development of *in vitro* cultivation and pure culture studies

Since the discovery of microorganisms, *in vitro* cultivation and isolation of bacteria in pure cultures has represented one of the major pillars in developing the science of microbiology. Introducing their pioneer work on the germ-disease theory, both Louis Pasteur and Robert Koch, and their associates, were able to present their nutrient broth “Bouillon, Nährflüssigkeit” and solid culture media, together with single colony isolation and pure cultures studies [1]. The well-known solid culture media consisting of meat extract, peptones and agar, were developed by the 1890s. With extensive progress in selectivity profiles, diagnostic properties, chromogenic reactions, pre- and selective enrichment power, culture media were the main tools to estimate viable counts, enrich, select and differentiate groups of bacteria. In addition, individuals were isolated in pure cultures to identify, study properties, test for secondary metabolites, and determine the genetic composition ([britannica.com/science/pure-culture](http://britannica.com/science/pure-culture)) [2,3]. Further environmental adaptation techniques are discussed in the section “From synthetic to environmental cultivation of microbiomes”.

## From plate count anomaly to candidate phyla

Nutrient agar and many other derived culture media, with their major components of meat extract and peptone developed for the isolation of pure isolates of human pathogens, have been continually used for culturing various types of microbiomes irrespective of the nature of their environments, whether humans, animals or plants [4–6]. Additionally, many of the earlier methods continued to be used, while discovering the major differences between the numbers of cells from natural environments that form viable colonies on agar media and the numbers observed by microscopy. This observation noted at the dawn of microbiology [7] was called “the great plate count anomaly” by Staley and Konopka [8], and continued to be researched by microbiologists over the years [9–12]. The phenomenon was brought sharply into focus, leading to the realization just how diverse and unexplored microorganisms are, as a result of analyzing microbial small subunit ribosomal RNA (SSU or 16S rRNA) gene sequences directly from environmental samples [13].

Historically, until the mid-1980s, most of the available microbial ecology knowledge was based on cultivation techniques and microscopy or enzyme activities measured in laboratories after substrate induction [14]. Then, Muyzer et al. [15] introduced the denaturing gradient gel electrophoresis (DGGE) technique, designed to separate specific PCR-amplified gene fragments, to analyze microbial communities without the need of culturing microorganisms. As a procedure, DNA samples extracted directly from the environment were targeted to amplify gene regions such as 16S rRNA for bacterial or ITS regions for fungal communities. Concomitantly, terminal restriction fragment length polymorphism (T-RFLP) was introduced to produce fingerprints of microbial communities [16]. The emergence of improved sequencing techniques, and the entailed increase of database-stored sequence information in combination with the development of *in situ* hybridization probes provided new methods for microbial community profiling, especially in the 90s, like the full-cycle or cyclic rRNA approach [17–19]. The major limitation of these methods, including

the 16S rRNA gene-based high throughput sequencing of PCR amplicon libraries and the PhyloChip microarray technology of 16S rRNA amplicons to oligonucleotide probes hybridization [20], is the PCR-biased amplification efficiency. This is affected by sample origin, DNA extraction method, primer specificity, and the proportion of target genes within the sample background, which usually favor highly abundant targets [21]. Nevertheless, data obtained by these methods revealed that members of the “rare” biosphere are actively attracted by specific environments, and may play an important role despite their low abundance [22].

Newer next generation sequencing techniques (NGS) did enable and simplify metagenomic and metatranscriptomic approaches that partially alleviate the PCR-related problems for just a single or a combination of taxonomic/phylogenetic marker genes by sequencing all genomic variants within an environmental sample [23]. This results in a highly comprehensive dataset of sequenced microbial reads representing genomic fragments or transcripts, that aimed to be assigned to operational taxonomic units (OTUs) and/or specific genes, to describe microbial taxonomic diversity and to estimate functional variety or activity of a certain taxonomic level, optimally of single strains. Although progresses have been achieved in extracting DNA/RNA from environmental samples to reduce contamination and increase purity, there are still limiting factors: (i) restrictions in sequencing methods (e.g. error rate); (ii) direct assignment of reads to their corresponding genes; (iii) gene assembly with the risk of chimaera production among other problems, and (iv) the quality and availability of annotated genes and gene families in the databases; which often lead to genes of unknown functions and consequently to unknown taxa [24].

To overcome the issues above, a huge variety of bioinformatic tools have been developed to prioritize read quality control and processing (e.g. FastQC, FastX, PRINSEQ, Cutadapt), contamination filtering (e.g. BMTagger), and chimaera detection (e.g. Uchime2). Further tools are applied to assign a specific read to its corresponding gene or protein, function or taxon, that can be alignment-based (e.g. BLASTn/x, DIAMOND, LAST, RAPSearch2) or alignment-free (e.g. KRAKEN); the latter mostly uses k-mers to minimize database inadequacies. Currently, comprehensive tools for taxonomic and/or functional classification of reads are exemplified by MEGAN6, MGRASP, MetaPhlan2 and Qiita. Notably, some of these metagenomic tools (e.g. MEGAN-LR) deal with the output of long-read sequencing techniques, such as of Pacific Biosciences (PacBio) or Oxford Nanopore Technologies (ONT) [25]. Those gains of interest in metagenomic research are due to the fact that taxonomic and its functional annotation do not rely anymore on single genes covered by multiple short reads (approx. 50–300 bp) and their gene copy number issues (e.g. 16S rRNA) but on multiple genes covered by long reads, with an average read length of 5 to 50 kb, whereof approx. 50% of the reads are larger than 14 kb [26].

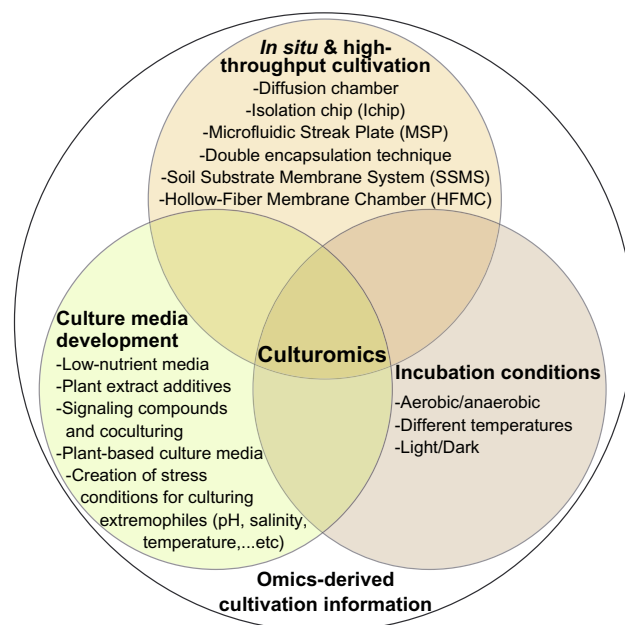
Continuous advances in high throughput genomic sequencing technologies, metagenomics and single cell genomics, have contributed new insights into uncultivated lineages. Several of the known microbial phyla, ~120 bacterial and 20 archaeal phyla, contain few cultivated representatives ([ncbi.nlm.nih.gov/Taxonomy/Browser/wwwtax.cgi](http://ncbi.nlm.nih.gov/Taxonomy/Browser/wwwtax.cgi)). Moreover, phyla composed exclusively of uncultured representatives are referred to as Candidate Phyla (CP) [27,28]. Such uncultivated majority, approx. 90 bacterial candidate phyla, defined as microbial dark matter and exist in various

environmental microbiomes [6,29–31]. Remarkably, metagenomics and microbiome analyses have detected so many candidate phyla, and phylogenetic analyses have revealed such a close relationship among many of them that the term “Candidate Phyla Radiation” (CPR) was coined for a group of uncultured bacteria that share evolutionary history [32–34].

The number of newly discovered candidate phyla is increasing due to further developments in metagenomic techniques and continual updating of genomic databases, and representing a striking challenge to the scientific community [27,35]. With increased metagenomic sampling and analysis, taxonomic boundaries and nomenclature are constantly being reassessed. Meanwhile, scientists have realized that bacterial and archaeal phyla without a single cultivated representative comprise the majority of life's current diversity [27,32,34]. Certainly, the current knowledge about the microbial world, not only the substantial roles played by microorganisms in the function of the biosphere but also their reservoir of novel bioactive compounds, is profoundly challenged by what have been cultivated in the laboratory [35]. So far, physiologic and genomic information has been confined to pure cultures and dominated by representation of the Proteobacteria, Firmicutes, Actinobacteria, and Bacteroidetes within the Bacteria and of methanogens and halotolerant members of the Euryarchaeota within Archaea [36].

### From synthetic to environmental cultivation of microbiomes

Today, it is established that culture media tailored for *in vitro* cultivation of microorganisms, including CP microorganisms, must provide environmental and nutritional conditions that resemble their natural habitats, combined with long incubation times [37]. Further attempts towards improving culture media to grow novel species depended mainly on supplementing macro- and micronutrients in the medium as well as manipulating cultivation conditions (Table 1). Conspicuous developments and higher throughput methods have been applied to marine and terrestrial environments (Fig. 1, Table 2), adopting a number of approaches reviewed by Epstein et al. [38]: for example, lowering nutrient con-



**Fig. 1.** Toolbox of strategies developed for improving culturability of environmental microbiomes. High throughput culturomics adopt various combinations of the specific methods of the 4 major strategies of *in situ* and high throughput cultivation, culture media development, incubation conditions, and genome-derived cultivation. For further details, please refer to Table 1.

centrations in standard media together with longer incubation [39], diluting to extinction to minimize the influence of fast growers and facilitate growth of oligotrophs [40], co-incubating cells individually encapsulated into microdroplets under low flux nutrient conditions [41], adding signaling compounds and/or cocultivation to trigger microbial growth [42,43].

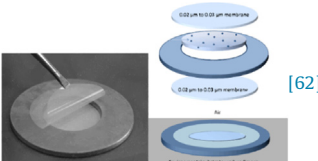
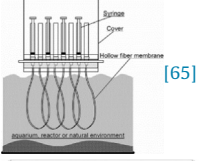
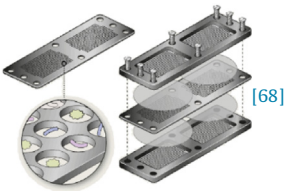
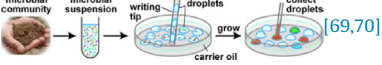
Novel *in situ* cultivation techniques, e.g. diffusion chambers, have been introduced to mimic natural conditions and provide access to critical growth factors found in the environment and/or

**Table 1**  
Progressive supplements of culture media to improve culturability of environmental microbiomes.

Culture media supplementation	Recovered taxa
Basal medium supplemented with isoleucine and yeast extract [44] <sup>a</sup>	<i>Aminobacterium mobile</i>
Basal medium supplemented with yeast extract [45]	<i>Acidilobus aceticus</i>
Nitrogen-free LGI-P medium supplemented with sugarcane juice [46]	<i>Burkholderia tropica</i>
10-fold-diluted Difco marine broth 2216 supplemented with yeast extract [47]	<i>Hoeflea phototrophica</i>
Postgate's medium B supplemented with yeast extract [48]	<i>Desulfitibacter alkalicolerans</i>
MPN soil solution equivalent (SSE) supplemented with pectin, chitin, soluble starch, cellulose, xylan, and curdlan as carbon sources [49]	<i>Edaphobacter modestus</i> and <i>Edaphobacter aggregans</i>
Basal medium supplemented with humic acid and vitamin B (HV medium) [50]	<i>Pseudonocardia eucalypti</i>
TSA, casein-starch, and 869 culture media supplemented with plant extracts [51]	<i>Kaistia</i> sp. and <i>Varivorax</i> sp.
Peptone-Yeast extract-Glucose medium (PYG) supplemented with Resuscitation-promoting factors (Rpf) [52]	<i>Arthrobacter liuii</i>
Modified Biebl and Pfennig's medium [53]	<i>Thiorhodococcus fuscus</i>
Culture media based on extracts of potato, onions, green beans, black beans, sweet corn, sweet potato, or lentils [54]	Biomass production of <i>Pseudomonas fluorescense</i>
Selective King's B medium supplemented with lichens extract [55]	Resulted in higher endo-lichenic and ecto-lichenic bacterial CFU counts
Basal medium supplemented with sugarcane bagasse [56]	Higher CFU recovery compared with other standard media
Fastidious anaerobic agar and blood agar media supplemented with siderophores-like molecules [57]	<i>Prevotella</i> sp., <i>Fretibacterium fastidiosum</i> , <i>Dialister</i> sp., and <i>Megasphaera</i> sp.
Minimal medium supplemented with peels of orange, potato, or banana [58]	Biomass production of <i>Bacillus subtilis</i>
PBS buffer supplemented with pig fecal slurry or dried grass hay as carbon sources [59]	<i>Streptococcus caviae</i>
MRS and TSB supplemented with Titania (TiO <sub>2</sub> ) nanoparticles [60]	Enhanced biocontrol performance of PGPR strains against <i>Fusarium culmorum</i>
Modified 80% ethanol soil extract culture media [61]	18 novel species including isolates belonging to <i>Verrucomicrobia</i> and <i>Elusimicrobia</i>

<sup>a</sup> Numbers between brackets refer to related references.

**Table 2**  
Developed novel methods to increase culturability of environmental microbiomes.

Developed methods	Recovered taxa	Method illustration
Diffusion Chamber [62] <sup>a</sup>	Deltaproteobacteria, Verrucomicrobia, Spirochaetes, and Acidobacteria	 [62]
Soil substrate membrane system (SSMS) [63,64]	Enrichment of uncultured Proteobacteria and TM7, as well as isolation of <i>Leifsonia xyli</i> sp. nov.	 [63,64]
Hollow-Fiber Membrane Chamber (HFMC) [65]	Enrichment of uncultured Alphaproteobacteria, Gammaproteobacteria, Betaproteobacteria, Actinobacteria, Spirochaetes, and Bacteroidetes	 [65]
Single cell encapsulation in gel microdroplets (GMD) [66]	Enrichment of uncultured Gammaproteobacteria, Betaproteobacteria, Alphaproteobacteria, Bacteroidetes, and Planctomycetes [67]	 [66]
Isolation chip (Ichip) [68]	Enrichment of Alphaproteobacteria, Betaproteobacteria, Deltaproteobacteria, Epsilonproteobacteria, Gammaproteobacteria, Actinobacteria, Bacteroidetes, Firmicutes, Planctomycetes, and Verrucomicrobia	 [68]
Single-Cell Cultivation on Microfluidic Streak Plates [69,70]	Enrichment of uncultured Proteobacteria, Firmicutes, Actinobacteria, Bacteroidetes, Acidobacteria, Planctomycetes, and Verrucomicrobia, in addition to isolation of novel <i>Dysgonomonas</i> sp.	 [69,70]

<sup>a</sup> Numbers between brackets refer to references related.

supplied by neighboring species. This allowed the cultivation of variants that otherwise would not grow *ex situ* [12]. Some of the resulting chamber-reared populations were spontaneously lab-domesticated to acquire the ability to grow *in vitro* [65]. Undoubtedly, the newly advanced cultivation technologies have unraveled the existence of new species *en masse*. However, microbiologists should be able and continue to minimize the gap between the microbial richness in nature and the number of species in culture, for the benefit of both basic and applied microbiology [12].

### Culturomics in place and the progress achieved

Realizing the imperative importance of bringing more bacterial isolates of environmental microbiomes into cultivation, the strategy of “culturomics” was introduced by the group of Didier Raoult and Jean-Christophe Lagier [5,71–73]. They developed a high throughput strategy of cultivation to study the human microbiota using matrix-assisted laser desorption/ionization time of flight mass spectrometry (MALDI-TOF-MS) and/or 16S rRNA amplification and sequencing to identify the growing colonies. The principals of culturomics are based on the diversified and multiple combinations

of various growth media, culturing conditions, atmospheres and times of incubation, that were reduced to only 18 culture conditions to standardize culturomics, and to complement the culture-dependent and culture-independent analyses (reviewed in Lagier et al. [72]; Table 3). The extensive application of MALDI-TOF-MS for rapid and high throughput identification of rare and new species allowed the group to dramatically extend the known human gut microbiome to levels equivalent to those of the pyrosequencing repertoire. Lagier et al. [71] identified > 1000 prokaryotic species, thereby adding > 500 species that represent > 50% increase in the total number of microorganisms known in the human gut. Furthermore, they were able to extend culturability of archaea without an external source of hydrogen to recover human archaeal species [74].

### The dawn of plant-based culture media

Although the results obtained with culturomics of human gut microbiome are immense and represent a success story, it did not draw much attention from research groups of the plant microbiome. Here, the compelling question is “should plant microbiologists follow the steps of human microbiome culturomics and



**Table 3**The basic principles and techniques of culturomics of human microbiota and results obtained at URMITE, Marseille, France.<sup>a</sup>

1. Out of 70 culturing conditions, 18 were defined for culturomics standardization, based on the following: Various combinations of culture media used for: – pre-enrichment in broth cultures, followed by – inoculating onto different agar plates for single colony isolation Culture conditions  Incubation temperature Incubation time	Various combinations of: – blood culture, rumen fluid, sheep blood, stool extract – Tryptic Soy Broth (TSB), marine broth – Aerobic, anaerobic atmospheres – Thermic shock at 80°C – Specific supplements (e.g. lipids, ascorbic acid) Ranging from 4 to 55°C From 1 to 30 days
2. Challenges faced and specific answers to isolate rare species Growth of bacteria having different physiological properties Overgrowth of fast growers  Fastidious bacterial species	Various incubation temperatures and gas phases (aerobe, anaerobe, microaerophile) Kill the winners by: – diverse antibiotics, and inhibitors (e.g. bile extract, sodium citrate, sodium thiosulphate) – heat shock (65°C and 80°C) – active and passive filtration – phages Pre-incubation (in selective blood culture bottles, rumen fluid)
3. Performance of identification of thousands of developed colonies Majority of colonies Confirmatory analyses for unidentified colonies Colonies representing potential new taxa	MALDI-TOF and comparisons with URMITE databases 16S rRNA gene or rpoB sequencing Taxonomogenomics: polyphasic approach of both phenotypic (e.g. primary phenotypic characteristics) and genotypic data (e.g. genome size, G + C content, gene content, RNA genes, mobile gene elements...etc) and compared with closely related type strains
4. Total of 531 species were added to the human gut repertoire Major phyla reported  Species known in humans but not in the gut Species not previously isolated in humans Potentially new species	Firmicutes, Actinobacteria, Bacteroidetes, Proteobacteria, Fusobacteria, Synergistetes, Lentisphaerae, Verrucomicrobia, Dinococcus-Thermus, and Euryarchaeota 146 bacteria 187 bacteria, 1 archaeon 197

<sup>a</sup> Source [71,72].

continue using general microbiological media containing nutrients of animal origin (e.g. nutrient agar and R2A, LB)?” The answer from plant endophytes themselves is illustrated in the graphical abstract. Plants, as a holobiont, intimately interplay with their surrounding biota [43–45]. They enter in a number of multiple interactions which are efficiently orchestrated via plant physico-chemical influences, mainly the root system “The Black Box” (Fig. 2). Such complexity of the plant holobiont is amplified when considering the multiplicity of plant interfaces and the high diversity of colonizing dwellers. From the plant side, organs represent multi-layer platforms for docked microorganisms; e.g. the roots constitute, from inward to outward, endorhizosphere, rhizoplane, and ectorhizosphere. Likewise, the leaves incorporate endophyllosphere, phylloplane, ectophyllosphere, as well as caulosphere (stems). Additional compartments develop throughout the plant life, i.e. anthosphere (flowers), carposphere (fruits), and spermosphere (seeds). Correspondingly, the plant microbiome is of great diversity of both prokaryotic (Bacteria, Archaea) and eukaryotic (fungi, oomycetes, and other protistic taxa) endophytes [75,76]. They are able to colonize below- and above-ground plant organs, and exercise profound positive (mutualists), negative (pathogens) and/or neutral/unidentified (commensal endophytes) impacts on plant nutrition and health. The picture is getting more complicated and even fascinated considering interaction between bacterial and fungal groups inside the plant itself, and ability of microbial groups of other environments, e.g. human pathogens, cross-bordering and adapting to the plant environments [77–79].

Studies emerged regarding the use of various plant materials as supplements to the general synthetic microbiological culture media, e.g. nutrient agar and R2A (Table 1, Table 4). Chemical analyses of dehydrated powders of fully-grown plants, legumes and non-legumes, illustrate the very rich and complex nutritional/chemical matrix of plants, which is very much imprinted on the root environment (Fig. 3) [80,81]. They contain copious sources of nutritional macromolecules, proteins and carbohydrates, major

and minor elements, amino acids and vitamins: a composition that is nearly impossible to tailor in one single or a general synthetic culture medium recommended for common cultivation of the plant microbiota that are used to enjoy such *in situ* nutritional milieu. Therefore, serious efforts were made to introduce and research natural culture media based on the plant, and its inhabiting microbiota, as a sole source of nutrients, in the form of juices, saps and/or dehydrated powders [80–87] (Fig. 2). For ease of application and practicability, the packaging of plant powders in tea-bags was recommended to further be used in the preparation of plant infusions necessary to formulate the plant medium [81]. The nutritional matrix, in terms of complexity, diversity and concentration of the prepared plant-only-based culture media, compared to standard culture media, was rich and compatible enough to satisfy growth of the plant microbiota, i.e. *in vitro* cultivation and *in situ* recovery.

The various forms of plant-only-based culture media supported excellent *in vitro* growth of hundreds of tested bacterial isolates [80–82,84–87] (Fig. 4). They represented 89 species of 23 families belonging to the big four phyla of Proteobacteria, Firmicutes, Bacteroidetes, and Actinobacteria (Fig. 4, Table 5). In addition, batch cultures of liquid culture media based on various plant materials, slurry homogenates, juices and/or dehydrated powders of various cultivated and desert plants, supported excellent biomass production ( $ca. > 10^8$  cells ml<sup>-1</sup>) of a number of plant growth-promoting bacteria (PGPB). The doubling times of tested *Klebsiella oxytoca*, *Enterobacter agglomerans*, and *Azospirillum brasilense* were comparable to standard culture media, if not shorter [80,86,87]. Interestingly, cell survivability in such batch cultures of plant media was maintained for longer times compared to standard culture media.

Examples of efficient production of microbial biomass and metabolites from culture media based on plant substrates and by-products of agro-industries exist in the literature, e.g. green biorefinery of brown and green juices [92,93]. Recently, the development of “plant pellets” for instant preparation of plant-based

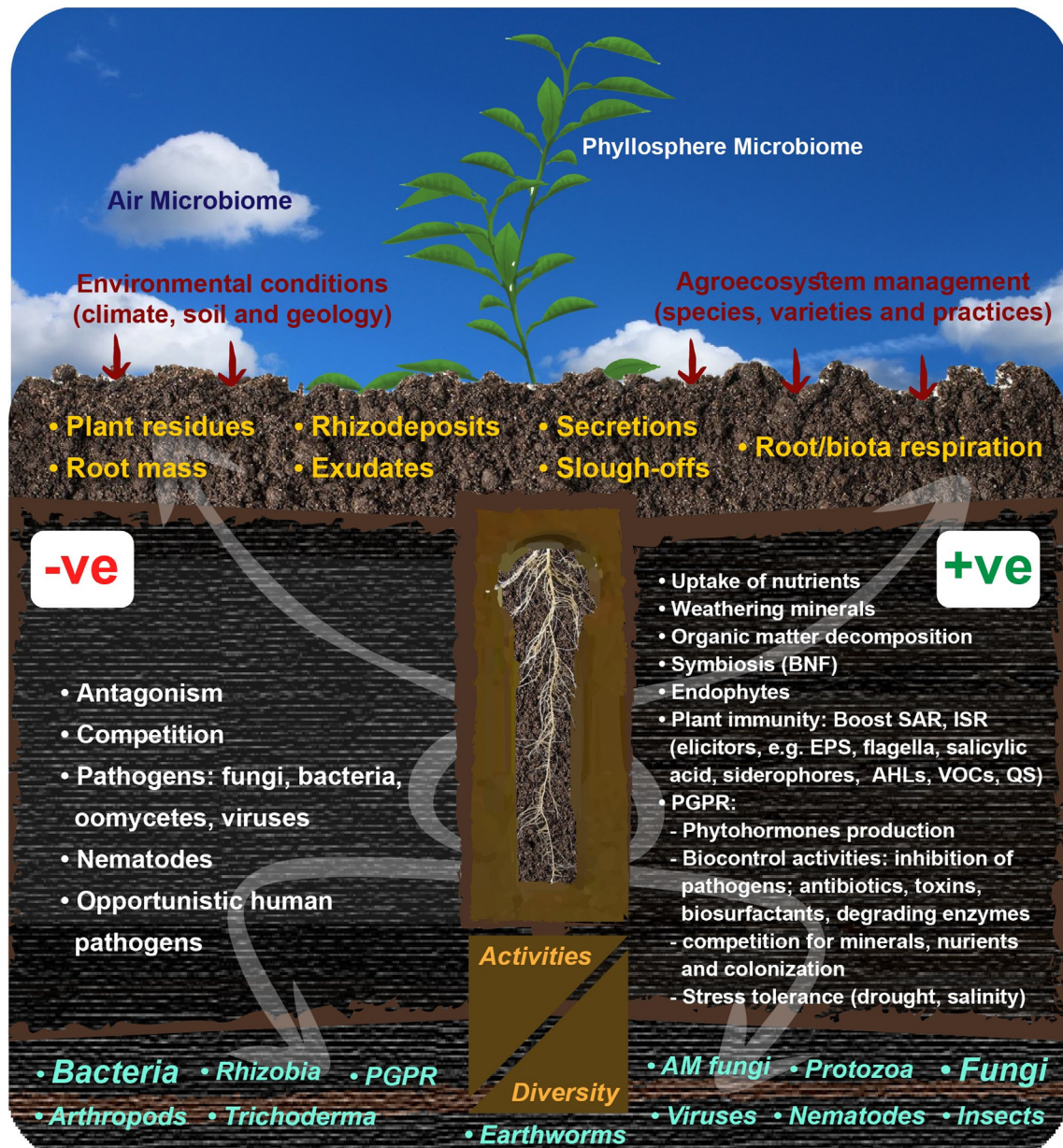
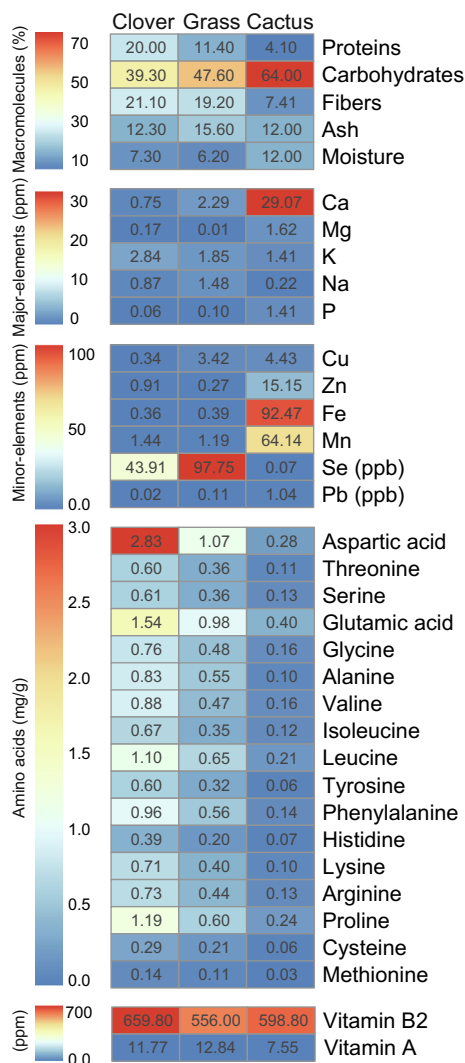


Fig. 2. The black box. A peek through the key slot of the black box, the contained environment of the plant root.

**Table 4**  
Enrichment and/or isolation of previously uncultivated bacterial taxa with the aid of plant materials, used as sole culture media or as supplement to standard culture media.

Bacterial taxa	Type of plant material	Used as sole culture media or as supplements	Isolated in pure culture or enriched <i>en masse</i>	Tested environments
<i>Gluconacetobacter diazotrophicus</i> [83] <sup>a</sup>	Sugarcane shoot	Sole	Isolated	Sugarcane
<i>Novosphingobium</i> sp. [82]	Lucerne shoots powder	Sole	Isolated	Lucerne roots
<i>Lysobacter</i> sp. [82]	Lucerne shoots powder	Sole	Isolated	Lucerne roots
<i>Pedobacter</i> sp. [82]	Lucerne shoots powder	Sole	Isolated	Lucerne roots
Verrucomicrobia Subdivision 1 [88]	Potato root extracts	Supplement	Isolated	Potato roots
<i>Paenibacillus gorilla</i> [6]	Mango juice	Sole	Isolated	Gorilla stool
<i>Paenibacillus camerounensis</i> [6]	Mango juice	Sole	Isolated	Gorilla stool
<i>Oenococcus oeni</i> [89]	Tomato juice	Supplement	Isolated	Fermented wines
<i>Rhizobacter daucus</i> [90]	Potato extract	Supplement	Isolated	Carrot roots
BRC1 [85]	Clover shoot powder	Sole	Enriched	Maize roots
Gracilibacteria (GN02) [85]	Clover shoot powder	Sole	Enriched	Maize roots
Omnitrophica (OP3) [85]	Clover shoot powder	Sole	Enriched	Maize roots
Atribacteria (OP9) [85]	Clover shoot powder	Sole	Enriched	Maize roots
Marinimicrobia (SAR406) [85]	Clover shoot powder	Sole	Enriched	Maize roots
Dependentiae (TM6) [85]	Clover shoot powder	Sole	Enriched	Maize roots
Latescibacteria (WS3) [85]	Clover shoot powder	Sole	Enriched	Maize roots
Armatimonadetes (OP10) [91]	Reed plant roots extract	Supplement	Isolated	Reed plant roots

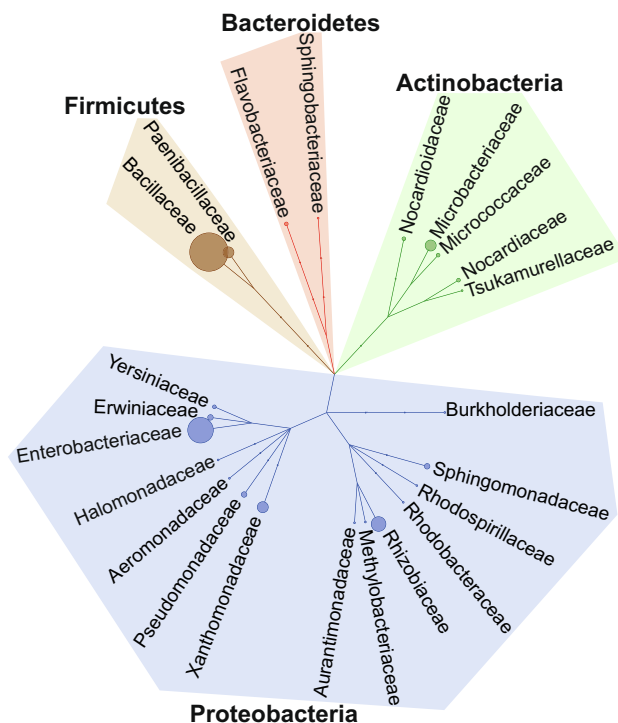
<sup>a</sup> Numbers between brackets refer to references related.



**Fig. 3.** Plant-based culture media. General chemical analyses of dehydrated powders of plants used to prepare plant-based culture media. The analyses included legume (*Trifolium alexandrinum*, Berseem clover), non-legume (*Paspalum vaginatum*, turfgrass), as well as the common desert cactus (*Opuntia ficus-indica*, prickly pear), and represents the mosaic of nutritional matrices of diversified macro-molecules, major and minor elements, amino acids, and vitamins. Source [80,81,86]

culture media for cultivation and biomass production of rhizobia, in terms of dry weight and optical density was successfully proceeded (data under review). Formulations of plant pellets were based on mixtures of Egyptian clover powder (*Trifolium alexandrinum* L.) together with supplements of agro-byproducts, glycerol and molasses. Such plant pellets are considered a cost and labor-effective scheme for lab and industrial use, satisfying requirements for production of agro-biopreparates.

The tested plant-only-based culture media supported *in situ* recovery of plant microbiota colonizing the ecto- and endorhizospheres. Reproducible results were obtained with all of the tested cultivated maize, clover, barley, as well as desert plants, ice plant and cacti [80–82,84–87]. Remarkably, the plant-based culture media supported higher percentages of culturability of endophytes [80–82,84–87]. The CFUs that developed were well-defined and distinct macro- and microcolonies, compared to the bigger, undefined, slimy and creeping colonies grown on standard nutrient and soil extract agar media [80–82,84–87]. Compared with the total bacterial numbers, based on qPCR analysis using the universal primers of Lane [94], and calculations of Klappenbach et al. [95]



**Fig. 4.** Plant-only-based culture media supported *in vitro* growth of hundreds of tested bacterial plant microbiota isolates. Phylogenetic relationships at the family level of 298 pure isolates in total tested and successfully grown on plant-only-based culture media, in their various formulations. The isolates represented 89 species and 23 families of the four big phyla (Proteobacteria, Firmicutes, Bacteroidetes, and Actinobacteria). The tree is based on the NCBI taxonomy database ([ncbi.nlm.nih.gov/Taxonomy/CommonTree/wwwcmt.cgi](http://ncbi.nlm.nih.gov/Taxonomy/CommonTree/wwwcmt.cgi)). For further details about the tested species, please refer to Table 5. Source [80,81,84,86]

and Schippers et al. [96], the culturable population, in terms of total CFUs, were higher on plant-only-based culture media (20–70%) than on standard culture media (2–18%) [80–82,84,85]. Such obvious increases in culturability are probably attributed to the distinguished development of microcolonies, percentages exceeded 30% of the total colonies, together with prolonged incubation time. This resembles other cultivation strategies reported to boost the development of such microcolonies, e.g. the use of over-layer agar plating techniques, diffusion chamber-based technique, encapsulation of cells in gel microdroplets and soil slurry membrane systems [41,63,97].

Culture-dependent DGGE fingerprinting of 16S rRNA gene of endophytes, grown on agar plates, clearly clustered the group of band profiles of plant-based culture media away from the tested standard culture media, and in the case of maize and barley joined with culture-independent bacterial communities of intact plant roots [80,81]. The plant-only-based culture media with their unique diversity and complexity of nutrients supported higher values of alpha diversity, an observation that was confirmed earlier by supplementing culture media with natural nutrients, e.g. soil extract [98]. This provides clear evidence on the highly relatedness/closeness of the culturable population developed on the plant-only-based culture media to the *in situ* population of endorhizosphere of clover and maize.

Furthermore, Saleh et al. [84] introduced specific plant-based-seawater culture media for successful recovery of the microbiome of halophytic plants grown in salt-affected environments of the Mediterranean basin. This culture medium increased culturability (>15.0–20.0%) compared to the conventional chemically-synthetic culture medium supplemented with (11.2%) or without



**Table 5**

Pure isolates tested and confirmed good growth on plant-only-based culture media with their various formulations

<b>Phylum: Actinobacteria</b>	Family: Aurantimonadaceae
Family: Nocardioidaceae	<i>Aureimonas altamirensis</i>
<i>Nocardioides zeiculis</i>	Family: Rhodobacteraceae
<i>Nocardio ides endophyticus</i>	<i>Paracoccus yeei</i>
Family: Nocardiaceae	Family: Yersiniaceae
<i>Rhodococcus enclensis</i>	<i>Serratia rubidaea</i>
<i>Rhodococcus cercidiphylli</i>	<i>Serratia ficaria</i>
Family: Micrococcaceae	Family: Xanthomonadaceae
<i>Kocuria marina</i>	<i>Lysobacter</i> sp.
<i>Kocuria rhizophila</i>	<i>Stenotrophomonas</i> sp.
Family: Tsukamurellaceae	<i>Stenotrophomonas maltophilia</i>
<i>Tsukamurella tyrosinosolvans</i>	Family: Methylobacteriaceae
Family: Microbacteriaceae	<i>Methylobacterium mesophilicum</i>
<i>Agreia</i> sp.	Family: Sphingomonadaceae
<i>Herbiconiux flava</i>	<i>Novosphingobium</i> sp.
<i>Plantibacter flavus</i>	<i>Sphingomonas</i> sp.
<i>Curtobacterium herbarum</i>	<i>Sphingomonas paucimobilis</i>
<i>Microbacterium</i> sp.	Family: Aeromonadaceae
<i>Curtobacterium flaccumfaciens</i>	<i>Aeromonas hydrophila</i>
<b>Phylum: Firmicutes</b>	Family: Erwiniaceae
Family: Paenibacillaceae	<i>Pantoea</i> sp.
<i>Brevibacillus</i> sp.	<i>Pantoea agglomerans</i>
<i>Brevibacillus nitrificans</i>	<i>Erwinia</i> sp.
<i>Paenibacillus timonensis</i>	Family: Enterobacteriaceae
<i>Paenibacillus</i> sp.	<i>Cronobacter</i> sp.
<i>Paenibacillus macerans</i>	<i>Cronobacter sakazakii</i>
<i>Paenibacillus polymyxa</i>	<i>Cronobacter dublinensis</i>
Family: Bacillaceae	<i>Kosakonia oryzae</i>
<i>Bacillus safensis</i>	<i>Kosakonia radcincitans</i>
<i>Bacillus velezensis</i>	<i>Kosakonia cowanii</i>
<i>Bacillus aryabhatai</i>	<i>Enterobacter cloacae</i>
<i>Bacillus aerophilus</i>	<i>Enterobacter ludwigii</i>
<i>Bacillus stratosphericus</i>	<i>Enterobacter</i> sp.
<i>Bacillus tequilensis</i>	<i>Escherichia</i> sp.
<i>Bacillus endophyticus</i>	<i>Klebsiella</i> sp.
<i>Bacillus flexus</i>	<i>Klebsiella pneumoniae</i>
<i>Bacillus vallismortis</i>	<i>Klebsiella oxytoca</i>
<i>Bacillus mojavenis</i>	<i>Citrobacter freundii</i>
<i>Bacillus smithii</i>	Family: Rhizobiaceae
<i>Bacillus lentus</i>	<i>Rhizobium aegyptiacum</i>
<i>Bacillus subtilis</i>	<i>Rhizobium rosettiformans</i>
<i>Bacillus subtilis</i> subsp. <i>subtilis</i>	<i>Rhizobium binae</i>
<i>Bacillus subtilis</i> subsp. <i>spizizenii</i>	<i>Rhizobium cellulosityticum</i>
<i>Bacillus</i> sp.	<i>Rhizobium etli</i>
<i>Bacillus pumilus</i>	<i>Rhizobium</i> sp.
<i>Bacillus megaterium</i>	<i>Sinorhizobium meliloti</i>
<i>Bacillus licheniformis</i>	<i>Agrobacterium tumefaciens</i>
<i>Bacillus circulans</i>	Family: Burkholderiaceae
<i>Bacillus cereus</i>	<i>Burkholderia cepacia</i>
<i>Bacillus amyloliquefaciens</i>	Family: Pseudomonadaceae
<b>Phylum: Bacteroidetes</b>	<i>Pseudomonas luteola</i>
Family: Sphingobacteriaceae	<i>Pseudomonas oryzihabitans</i>
<i>Pedobacter</i> sp.	<i>Azotobacter chroococcum</i>
Family: Flavobacteriaceae	<i>Pseudomonas</i> sp.
<i>Chryseobacterium lathyr</i>	<i>Pseudomonas fluorescens</i>
<i>Chryseobacterium indologenes</i>	<i>Pseudomonas aeruginosa</i>
<b>Phylum: Proteobacteria</b>	Family: Rhodospirillaceae
Family: Halomonadaceae	<i>Azospirillum brasilense</i>
<i>Halomonas</i> sp.	

(3.8%) NaCl. Based on 16S rRNA gene sequencing, representative isolates of prevalent halotolerant bacteria were closely related to *Bacillus* spp., *Halomonas* spp., and *Kocuria* spp. Remarkable improvement in culturability of endophytic fungi and bacteria was also reported by the use of plant-supplemented culture media [99–103]. Moreover, dehydrated powders of leguminous seeds successfully replaced the beef extract in the selective MRS culture medium, and supported better growth of probiotic bacteria of *Lactobacillus casei* and *Lactobacillus lactis* [104].

It was evident that the use of plant-only-based culture media successfully extended the range of cultivability among rhizobacte-

ria of Lucerne. Such plant-based culture media enabled the successful recovery of its specific micro-symbiont, namely *Sinorhizobium meliloti*, which require multiple growth factors, e.g. amino acids/vitamins [105], naturally present with balanced amounts in the plant medium, compared to obscure quantities in the yeast extract added to the standard culture media of YEM, LB, and TY [105]. Cultivability was further extended to fastidious and hard-to-grow and/or not-yet-cultivated members. This included non-rhizobia isolates whose cultivation require very rich media supplemented with a variety of growth factors, e.g. *Novosphingobium*, requiring casein hydrolysate, nicotinic acid, pyridoxine, thiamine, glycine, asparagine and glutamine [106]; *Pedobacter*, requiring tryptone, yeast extract, and NH<sub>4</sub>Cl [107], and *Lysobacter*, requiring yeast extract, in addition to antibacterial and antifungal drugs inhibiting other microorganisms [108].

### Unculturability and candidate phyla in the plant microbiome

The main reason behind unculturability of certain microorganisms is their own genetic make-up that confers the metabolic, physiological, and ecological potentials. In that sense, unculturability might be attributed to two main reasons: first, the auxotrophic nature of microbes with minimal genomes and restricted anabolic capacities [32]. This auxotrophy may range from minimal levels, lacking single or a few critical elements, e.g. vitamins, co-enzymes, a few amino acids, to maximal levels, e.g. absence of entire metabolic pathways such as biosynthesis of amino acids and nucleotides. Assuming that a bacterial strain lacks only one gene (or gene cluster) for synthesizing a particular organic compound, this particular compound may be added to the culture medium to enable growth. However, the number of genes lacking, i.e. the degree of auxotrophy of a bacterium, determines the possibility of generating a strain-supplementing culture medium. Second, the oligo-/prototrophic nature, where microbes with large genomes and complex metabolism, are capable of synthesizing the majority of their nutritional needs but have restricted replication mechanisms, i.e. maintain single or double rRNA operons (*rrn*). It is reported that *rrn* copy number is a reliable and generalized proxy for bacterial adaptation to resource availability [109,110].

Sarhan et al. [85] analyzed the overall phyla abundance of the culturable maize root microbiome developed on plant-only-based culture media. They demonstrated significant enrichment of the candidate phyla BRC1, Omnitrophica (OP3), Atribacteria (OP9), Dependientiae (TM6), Latescibacteria (WS3), and Marinimicrobia (SAR406), on mixed agar plates (Fig. 4 in Sarhan et al. [85]). This is in addition to the enrichment of some representative OTUs belonging to AC1, FBP, Gracilibacteria (GN02), Hydrogenedentes (NKB19), Parcubacteria (OD1), Aminicenantes (OP8), Armatimonadetes (OP10), Microgenomates (OP11), Ignavibacteriae (ZB3), WPS-2, and WS2 (Fig. S5 in Sarhan et al. [85]). The significant enrichment of all of such candidate phyla and diverse OTUs on the plant-based culture media, even as mixed cultures, is a strong indication of the complexity and diversity of nutrients in such media that most likely fulfill the nutritional requirements, and mimic conditions that prevail in their natural habitat, as symbionts [111]. This is also confirmed by the successful isolation and recovery of some taxa of candidate phyla radiation (CPR), *Candidatus* Phytoplasma, and TM7, by tedious efforts to construct a complex culture media to satisfy their nutritional requirements [112,113].

### Ultra-small bacterial and archaeal cells

Some groups of Bacteria and Archaea produce ultra-small cells (also called ultramicrobacteria, UMB) with diameters < 0.5 μm (often < 0.3 μm) and genomes < 1 Mb [114,115]. Such UMB



recently showed considerable overlap with bacterial Candidate Phyla Radiation (CPR) [32,116]. These prokaryotes have lost many genes underlying the biosynthesis of such metabolites that can be easily taken up, depending on either symbiotic partners or freely available compounds in the surrounding community. These uptake abilities can compensate for missing nucleotides, lipids, and amino acid biosynthesis pathways [27,117]. Although this minimization of genomes and cell sizes appears to contradict the “rationale” of evolution, it can provide several benefits to bacteria, such as evading host immunity of animals or plants, and Rhizophagy [118,119]. It is also reported that the smaller the cell the easier the transit through plant cell walls, e.g. *Candidatus* Phytoplasma [120].

Remarkably, free-living organisms have been found to be among the ultra-small prokaryotes, but there is evidence that many of them are ectosymbionts or reliant on amoebal hosts [27]. Consistently, UMB were found to express abundant pili, which may be necessary for interacting with other organisms or the environment via adhesion to extracellular surfaces [27]. Another important feature of UMB, that hinder their cultivation, is the low numbers of ribosomes, which in turn allow only low growth rates [114]. Due to such slow growth rates, UMB cannot compete with fast growing bacteria on nutrient-rich media. In general, the likelihood of isolating and culturing UMB can be considered to be low for strains that rely mainly on host or microbial community metabolism. However, alternative cultivation approaches have successfully been applied for culturing few strains that were previously thought to be unculturable. Interestingly, plant-only-based culture media were able to enrich such UMB phyla (Dependentiae (TM6), Gracilibacteria (GN02), Omnitrophica (OP3), Parcubacteria (OD1), and Saccharibacteria (TM7)) among the maize root microbiome [85]. Such a group of phyla were reported among the low abundance bacterial groups in various environments [116].

#### Large genome sizes and culturability

On the contrary, a large genome size does not inevitably imply easily culturing, but rather, possibly complicate the cultivation demands. Various genomic and physiological characterization studies of candidate phyla revealed examples of large genomes with comprehensive metabolic capabilities. Such capabilities are contrary to recently analyzed genomes of several candidate bacterial phyla, which have restricted anabolic capacities, small genome size, and depend on syntrophic interactions for growth [121]. In contrast, these large genomes possess single or limited copy numbers of *rrn*, which in turn is reflected in slow cell growth rates. It is also reported that the number of *rrn* in bacterial genomes predicts two important components of reproduction: growth rate and growth efficiency [110]. This implies that the growth rate of bacteria positively correlates with *rrn* copy numbers, i.e. bacteria that possess multiple *rrn* have higher growth rates and shorter doubling times than those with single or double operons [95,110]. An example is the candidate phylum OP10 “Armatimonadetes”, which have a genome of ~5.2 Mb and the majority of metabolic pathways involved in biosynthesis of fatty acids, purines, and pyrimidines, but lack some TCA and histidine biosynthesis enzymes. Despite this relatively large genome size, it possesses a single split *rrn* [122].

Successfully, the first isolate of OP10 was cultivated on one hundred-fold diluted Trypticase Soy Agar (TSA) culture media [123]. Another OP10 isolate was enriched and isolated from reed plants using minimal media supplemented with ground plant roots as a carbon source (Table 4) [91]. In general, OP10 isolates do not require any unique substrate for their cultivation, but only prolonging cultivation (~30 days) and low-nutrient media. Hence, colonies of OP10 fail to grow on high-strength nutrients (higher

than 1.5 g of total organic carbon per liter) such as nutrient agar, TSA, or LB media [124].

Another striking example is the candidate phylum WS3 “Latescibacteria”, which maintains a relatively large genome of ~7.7 Mb, and encodes numerous biosynthetic capabilities and a rich repertoire of catabolic enzymes and transporters, with the potential to utilize a variety of substrates [121]. This bacterial phylum lacks a single representative isolate, and has an anaerobic nature and predicted slow growth rate due to possessing a relatively large genome and a single *rrn*. However, OTUs of such phyla have been enriched *in vitro* among the bacterial phyla of maize roots using plant-only-based culture media for cultivation (Fig. 4 in Sarhan et al. [85]). Another situation is the phylum Verrucomicrobia, which have been isolated on oligotrophic culture media containing potato rhizosphere extracts. Such plant-enriched culture media recovered the highest CFU counts in general, and microcolonies in particular, at least seven-fold more effectively than recovery observed on R2A [88]. Moreover, *Akkermansia muciniphila*, the previously unculturable human gut bacterial strain, has been enriched among the plant microbiome of maize roots on plant-only-based culture media [85]. In general, such phylum were reported to require prolonged incubation periods, since their doubling time ranges from 7 to 14 hours, and analysis of their genome, ~5.2 Mb, revealed anaerobic metabolism as well as a single *rrn* [125].

#### Conclusions and future perspectives

Specific culturomics strategies based on the plant-based culture media and multi-omics-derived information are the future keys to discover novel members of plant microbiomes, and hidden secrets of their multi-interactions with host plants. These proposed strategies would lead to recovering novel taxa of critical ecological niches, i.e. plant-beneficial microbes and plant-pathogens, revealing mechanisms of plant-microbiome adaptation and co-evolution, and help to understand complex microbe-microbe network interactions. This is not only to enable cultivation of the not-yet-cultured highly abundant core microbial members, but also to mine for less abundant species, which can empower and facilitate plant microbiome engineering for future improvement of plant fitness and yield production.

#### Conflict of interest

The authors have declared no conflict of interest.

#### Compliance with Ethics Requirements

This article does not contain any studies with human or animal subjects.

#### Acknowledgments

The present work was funded by the German-Egyptian Research Fund (GERF-STDF 5032). Hegazi acknowledges the support of Alexander von Humboldt Foundation, for equipment subsidies and financing his research stays in Germany and at IGZ in particular, and of the German Academic Exchange Service (DAAD) for funding Cairo University student trainings at IGZ, Germany. Our gratitude is extended to Prof. Eckhard George, the IGZ research director, for his continuous support and cooperation. We are grateful to Mr. Michael Becker for depicting our idea of the vegetarian nature of the plant endophytes in the cartoon drawing presented as the graphical abstract, and to our undergraduate student Abdul Karim Noah for his excellent help in graphical designs.

## References

- [1] Koch R. Zur Untersuchung von Pathogenen Organismen (1881). Robert Koch, Springer; 2018. p. 45–111.
- [2] Basu S, Bose C, Ojha N, Das N, Das J, Pal M, et al. Evolution of bacterial and fungal growth media. *Bioinformatics* 2015;11:182.
- [3] Atlas RM. Handbook of microbiological media. CRC Press; 2010.
- [4] Bai Y, Muller DB, Srinivas G, Garrido-Oter R, Potthoff E, Rott M, et al. Functional overlap of the *Arabidopsis* leaf and root microbiota. *Nature* 2015;528:364–9.
- [5] Lagier JC, Dubourg G, Million M, Cadoret F, Bilen M, Fenollar F, et al. Culturing the human microbiota and culturomics. *Nat Rev Microbiol*. 2018;540–50.
- [6] Bittar F, Keita MB, Lagier J-C, Peeters M, Delaporte E, Raoult D. *Gorilla gorilla gorilla* gut: a potential reservoir of pathogenic bacteria as revealed using culturomics and molecular tools. *Sci Rep*. 2014;4:7174.
- [7] Zur Methodik Winterberg H, der Bakterienzählung. *Med Microbiol Immunol*. 1898;29:75–93.
- [8] Staley JT, Konopka A. Measurement of *in situ* activities of nonphotosynthetic microorganisms in aquatic and terrestrial habitats. *Annu Rev Microbiol*. 1985;39:321–46.
- [9] Sura-de Jong M, Reynolds RJ, Richterova K, Musilova L, Staicu LC, Chocholata I, et al. Selenium hyperaccumulators harbor a diverse endophytic bacterial community characterized by high selenium resistance and plant growth promoting properties. *Front Plant Sci*. 2015;6:113.
- [10] Amann J. Die direkte Zählung der Wasserbakterien Mittels des Ultramikroskops. *Centralbl f Bakteriol*. 1911;29:381–4.
- [11] Cochran WG. The comparison of percentages in matched samples. *Biometrika* 1950;37:256–66.
- [12] Epstein SS. The phenomenon of microbial uncultivability. *Curr Opin Microbiol*. 2013;16:636–42.
- [13] Baker GC, Smith JJ, Cowan DA. Review and re-analysis of domain-specific 16S primers. *J Microbiol Methods*. 2003;55:541–55.
- [14] Jansson JK, Neufeld JD, Moran MA, Gilbert JA. Omics for understanding microbial functional dynamics. *Environ Microbiol* 2012;14:1–3.
- [15] Muyzer G, de Waal EC, Uitterlinden AG. Profiling of complex microbial populations by denaturing gradient gel electrophoresis analysis of polymerase chain reaction-amplified genes coding for 16S rRNA. *Appl Environ Microbiol* 1993;59:695–700.
- [16] Marsh TL, Saxman P, Cole J, Tiedje J. Terminal restriction fragment length polymorphism analysis program, a web-based research tool for microbial community analysis. *Appl Environ Microbiol* 2000;66:3616–20.
- [17] Amann RI, Binder BJ, Olson RJ, Chisholm SW, Devereux R, Stahl DA. Combination of 16S rRNA-targeted oligonucleotide probes with flow cytometry for analyzing mixed microbial populations. *Appl Environ Microbiol* 1990;56:1919–25.
- [18] Alm EW, Oerther DB, Larsen N, Stahl DA, Raskin L. The oligonucleotide probe database. *Appl Environ Microbiol* 1996;62:3557.
- [19] Amann RI, Ludwig W, Schleifer K-H. Phylogenetic identification and *in situ* detection of individual microbial cells without cultivation. *Microbiol Mol Biol Rev* 1995;59:143–69.
- [20] Brodie EL, DeSantis TZ, Joyner DC, Baek SM, Larsen JT, Andersen GL, et al. Application of a high-density oligonucleotide microarray approach to study bacterial population dynamics during uranium reduction and reoxidation. *Appl Environ Microbiol* 2006;72:6288–98.
- [21] Hansen MC, Tolker-Nielsen T, Givskov M, Molin S. Biased 16S rDNA PCR amplification caused by interference from DNA flanking the template region. *FEMS Microbiol Ecol* 1998;26:141–9.
- [22] Dawson W, Hor J, Egert M, van Kleunen M, Pester M. A small number of low-abundance bacteria dominate plant species-specific responses during rhizosphere colonization. *Front Microbiol* 2017;8:975.
- [23] Sergaki C, Lagunas B, Lidbury I, Gifford ML, Schafer P. Challenges and approaches in microbiome research: from fundamental to applied. *Front Plant Sci* 2018;9:1205.
- [24] Prosser JL. Dispersing misconceptions and identifying opportunities for the use of 'omics' in soil microbial ecology. *Nat Rev Microbiol* 2015;13:439–46.
- [25] Huson DH, Albrecht B, Bagci C, Bessarab I, Gorska A, Jolic D, et al. MEGAN-LR: new algorithms allow accurate binning and easy interactive exploration of metagenomic long reads and contigs. *Biol Direct* 2018;13:6.
- [26] Driscoll CB, Otten TG, Brown NM, Dreher TW. Towards long-read metagenomics: complete assembly of three novel genomes from bacteria dependent on a diazotrophic cyanobacterium in a freshwater lake co-culture. *Stand Genomic Sci* 2017;12:9.
- [27] Solden L, Lloyd K, Wrighton K. The bright side of microbial dark matter: lessons learned from the uncultivated majority. *Curr Opin Microbiol* 2016;31:217–26.
- [28] Brown CT, Hug LA, Thomas BC, Sharon I, Castelle CJ, Singh A, et al. Unusual biology across a group comprising more than 15% of domain Bacteria. *Nature* 2015;523:208–11.
- [29] Hacquard S, Garrido-Oter R, Gonzalez A, Spaepen S, Ackermann G, Lebeis S, et al. Microbiota and host nutrition across plant and animal kingdoms. *Cell Host Microbe* 2015;17:603–16.
- [30] Philippot L, Raaijmakers JM, Lemanceau P, van der Putten WH. Going back to the roots: the microbial ecology of the rhizosphere. *Nat Rev Microbiol* 2013;11:789–99.
- [31] Banerjee S, Schlaeppli K, van der Heijden MGA. Keystone taxa as drivers of microbiome structure and functioning. *Nat Rev Microbiol* 2018;16:567–76.
- [32] Hug LA, Baker BJ, Anantharaman K, Brown CT, Probst AJ, Castelle CJ, et al. A new view of the tree of life. *Nat Microbiol* 2016;1:16048.
- [33] Attar N. Bacterial evolution: CPR breathes new air into the tree of life. *Nat Rev Microbiol* 2016;14:332–3.
- [34] Parks DH, Chuvochina M, Waite DW, Rinke C, Skarshewski A, Chaumeil PA, et al. A standardized bacterial taxonomy based on genome phylogeny substantially revises the tree of life. *Nat Biotechnol* 2018;36:996–1004.
- [35] Hedlund BP, Dodsworth JA, Murugapiran SK, Rinke C, Woyke T. Impact of single-cell genomics and metagenomics on the emerging view of extremophile "microbial dark matter". *Extremophiles* 2014;18:865–75.
- [36] Rinke C, Schwientek P, Sczyrba A, Ivanova NN, Anderson IJ, Cheng JF, et al. Insights into the phylogeny and coding potential of microbial dark matter. *Nature* 2013;499:431–7.
- [37] Henson MW, Pitre DM, Weckhorst JL, Lanclus VC, Webber AT, Thrash JC. Artificial seawater media facilitate cultivating members of the microbial majority from the Gulf of Mexico. *mSphere* 2016;1.
- [38] Epstein SS, Lewis K, Nichols D, Gavrish E. New approaches to microbial isolation. *Manual of Industrial Microbiology and Biotechnology*, 3rd ed., American Society of Microbiology; 2010. p. 3–12.
- [39] Davis KE, Joseph SJ, Janssen PH. Effects of growth medium, inoculum size, and incubation time on culturability and isolation of soil bacteria. *Appl Environ Microbiol* 2005;71:826–34.
- [40] Button DK, Schut F, Quang P, Martin R, Robertson BR. Viability and isolation of marine bacteria by dilution culture: theory, procedures, and initial results. *Appl Environ Microbiol* 1993;59:881–91.
- [41] Zengler K, Toledo G, Rappe M, Elkins J, Mathur EJ, Short JM, et al. Cultivating the uncultured. *Proc Natl Acad Sci USA* 2002;99:15681–6.
- [42] Bruns A, Cypionka H, Overmann J. Cyclic AMP and acyl homoserine lactones increase the cultivation efficiency of heterotrophic bacteria from the central Baltic Sea. *Appl Environ Microbiol* 2002;68:3978–87.
- [43] D'Onofrio A, Crawford JM, Stewart EJ, Witt K, Gavrish E, Epstein S, et al. Siderophores from neighboring organisms promote the growth of uncultured bacteria. *Chem Biol* 2010;17:254–64.
- [44] Baena S, Fardeau ML, Labat M, Ollivier B, Garcia JL, Patel BK. *Aminobacterium mobile* sp. nov., a new anaerobic amino-acid-degrading bacterium. *Int J Syst Evol Microbiol* 2000;50(1):259–64.
- [45] Prokofeva MI, Miroshnichenko ML, Kostrikin NA, Chernyh NA, Kuznetsov BB, Tourova TP, et al. *Acidilobus aceticus* gen. nov., sp. nov., a novel anaerobic thermoacidophilic archaeon from continental hot vents in Kamchatka. *Int J Syst Evol Microbiol* 2000;50(6):2001–8.
- [46] Reis VM, Estrada -de los Santos P, Tenorio-Salgado S, Vogel J, Stoffels M, Guyon S, et al. *Burkholderia tropica* sp. nov., a novel nitrogen-fixing, plant-associated bacterium. *Int J Syst Evol Microbiol* 2004;54:2155–62.
- [47] Biehl H, Tindall BJ, Pukall R, Lünsdorf H, Allgaier M, Wagner-Döbler I. *Hoefelia phototrophica* sp. nov., a novel marine aerobic alphaproteobacterium that forms bacteriochlorophyll a. *Int J Syst Evol Microbiol* 2006;56(4):821–6.
- [48] Nielsen MB, Kjeldsen KU, Ingvorsen K. *Desulfibacter alkalitolerans* gen. nov., sp. nov., an anaerobic, alkalitolerant, sulfite-reducing bacterium isolated from a district heating plant. *Int J Syst Evol Microbiol* 2006;56:2831–6.
- [49] Koch IH, Gich F, Dunfield PF, Overmann J. *Edaphobacter modestus* gen. nov., sp. nov., and *Edaphobacter aggregans* sp. nov., acidobacteria isolated from alpine and forest soils. *Int J Syst Evol Microbiol* 2008;58:1114–22.
- [50] Kaewkla O, Franco CM. *Pseudonocardia eucalypti* sp. nov., an endophytic actinobacterium with a unique knobby spore surface, isolated from roots of a native Australian eucalyptus tree. *Int J Syst Evol Microbiol* 2011;61:742–6.
- [51] Evers N, Gielen M, Sánchez-López A, Jaspers S, White J, Vangronsveld J, et al. Optimization of isolation and cultivation of bacterial endophytes through addition of plant extract to nutrient media. *Microbiol Biotechnol* 2015;8:707–15.
- [52] Yu XY, Zhang L, Ren B, Yang N, Liu M, Liu XT, et al. *Arthrobacter liuii* sp. nov., resuscitated from Xinjiang desert soil. *Int J Syst Evol Microbiol* 2015;65:896–901.
- [53] Lakshmi K, Divyashree B, Sucharita K, Sasikala C, Ramana CV. *Thiorhodococcus fuscus* sp. nov., isolated from a lagoon. *Int J Syst Evol Microbiol* 2015;65:3938–43.
- [54] Khalil S, Ali TA, Skory C, Slininger PJ, Schisler DA. Evaluation of economically feasible, natural plant extract-based microbiological media for producing biomass of the dry rot biocontrol strain *Pseudomonas fluorescens* P22Y05 in liquid culture. *World J Microbiol Biotechnol* 2016;32:25.
- [55] Biosca EG, Flores R, Santander RD, Diez-Gil JL, Barreno E. Innovative approaches using lichen enriched media to improve isolation and culturability of lichen associated bacteria. *PLoS ONE* 2016;11. e0160328.
- [56] Mello BL, Alessi AM, McQueen-Mason S, Bruce NC, Polikarpov I. Nutrient availability shapes the microbial community structure in sugarcane bagasse compost-derived consortia. *Sci Rep*. 2016;6:38781.
- [57] Vartoukian SR, Adamowska A, Lawlor M, Moazzez R, Dewhirst FE, Wade WG. *In vitro* cultivation of 'unculturable' oral bacteria, facilitated by community culture and media supplementation with siderophores. *PLoS ONE* 2016;11. e0146926.
- [58] Rane AN, Baikar VV, Ravi Kumar V, Deopurkar RL. Agro-Industrial Wastes for Production of Biosurfactant by *Bacillus subtilis* ANR 88 and Its Application in Synthesis of Silver and Gold Nanoparticles. *Front Microbiol* 2017;8:492.
- [59] Ayudthaya SPN, Hilderink IJ, van der Oost J, de Vos WM, Plugge CM. *Streptococcus caviae* sp. nov., isolated from guinea pig faecal samples. *Int J Syst Evol Microbiol* 2017;67:1551–6.
- [60] Timmusk S, Seisenbaeva G, Behers L. Titania (TiO<sub>2</sub>) nanoparticles enhance the performance of growth-promoting rhizobacteria. *Sci Rep* 2018;8:617.

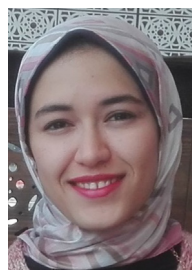
- [61] Nguyen TM, Seo C, Ji M, Paik M-J, Myung S-W, Kim J. Effective soil extraction method for cultivating previously uncultured soil bacteria. *Appl Environ Microbiol* 2018;84:e011445–e1218.
- [62] Bollmann A, Lewis K, Epstein SS. Incubation of environmental samples in a diffusion chamber increases the diversity of recovered isolates. *Appl Environ Microbiol* 2007;73:6386–90.
- [63] Ferrari BC, Binnerup SJ, Gillings M. Microcolony cultivation on a soil substrate membrane system selects for previously uncultured soil bacteria. *Appl Environ Microbiol* 2005;71:8714–20.
- [64] Ferrari BC, Gillings MR. Cultivation of fastidious bacteria by viability staining and micromanipulation in a soil substrate membrane system. *Appl Environ Microbiol* 2009;75:3352–4.
- [65] Aoi Y, Kinoshita T, Hata T, Ohta H, Obokata H, Tsuneda S. Hollow-fiber membrane chamber as a device for *in situ* environmental cultivation. *Appl Environ Microbiol* 2009;75:3826–33.
- [66] Dichosa AE, Daughton AR, Reitenga KG, Fitzsimons MS, Han CS. Capturing and cultivating single bacterial cells in gel microdroplets to obtain near-complete genomes. *Nat Protoc* 2014;9:608–21.
- [67] Ben-Dov E, Kramarsky-Winter E, Kushmaro A. An *in situ* method for cultivating microorganisms using a double encapsulation technique. *FEMS Microbiol Ecol* 2009;68:363–71.
- [68] Nichols D, Cahoon N, Trakhtenberg E, Pham L, Mehta A, Belanger A, et al. Use of ichip for high-throughput *in situ* cultivation of “uncultivable” microbial species. *Appl Environ Microbiol* 2010;76:2445–50.
- [69] Jiang CY, Dong L, Zhao JK, Hu X, Shen C, Qiao Y, et al. High-throughput single-cell cultivation on microfluidic streak plates. *Appl Environ Microbiol* 2016;82:2210–8.
- [70] Zhou N, Sun YT, Chen DW, Du W, Yang H, Liu SJ. Harnessing microfluidic streak plate technique to investigate the gut microbiome of *Reticulitermes chinensis*. *Microbiologyopen* 2018:e00654.
- [71] Lagier JC, Khelaifa S, Alou MT, Ndongo S, Dione N, Hugon P, et al. Culture of previously uncultured members of the human gut microbiota by culturomics. *Nat Microbiol* 2016;1:16203.
- [72] Lagier JC, Hugon P, Khelaifa S, Fournier PE, La Scola B, Raoult D. The rebirth of culture in microbiology through the example of culturomics to study human gut microbiota. *Clin Microbiol Rev* 2015;28:237–64.
- [73] Samb-Ba B, Mazenot C, Gassama-Sow A, Dubourg G, Riche H, Hugon P, et al. MALDI-TOF identification of the human Gut microbiome in people with and without diarrhea in Senegal. *PLoS ONE* 2014;9:e87419.
- [74] Khelaifa S, Lagier JC, Nkamga VD, Guilhot E, Drancourt M, Raoult D. Aerobic culture of methanogenic archaea without an external source of hydrogen. *Eur J Clin Microbiol Infect Dis* 2016;35:985–91.
- [75] Partida-Martinez LP, Heil M. The microbe-free plant: fact or artifact? *Front Plant Sci* 2011;2:100.
- [76] Rodriguez RJ, White Jr JF, Arnold AE, Redman RS. Fungal endophytes: diversity and functional roles. *New Phytol* 2009;182:314–30.
- [77] Müller H, Berg C, Landa BB, Auerbach A, Moissl-Eichinger C, Berg G. Plant genotype-specific archaeal and bacterial endophytes but similar *Bacillus* antagonists colonize Mediterranean olive trees. *Front Microbiol* 2015;6:138.
- [78] Hardoim PR, Hardoim CC, Van Overbeek LS, Van Elsas JD. Dynamics of seed-borne rice endophytes on early plant growth stages. *PLoS ONE* 2012;7:e30438.
- [79] Hardoim PR, van Overbeek LS, Berg G, Pirttilä AM, Compant S, Campisano A, et al. The hidden world within plants: ecological and evolutionary considerations for defining functioning of microbial endophytes. *Microbiol Mol Biol Rev* 2015;79:293–320.
- [80] Mourad EF, Sarhan MS, Daanaa HA, Abdou M, Morsi AT, Abdelfadeel MR, et al. Plant materials are sustainable substrates supporting new technologies of plant-only-based culture media for *in vitro* culturing of the plant microbiota. *Microbes Environ* 2018;33:40–9.
- [81] Sarhan MS, Mourad EF, Hamza MA, Youssef HH, Scherwinski AC, El-Tahan M, et al. Plant powder teabags: a novel and practical approach to resolve culturability and diversity of rhizobacteria. *Physiol Plant* 2016;157:403–13.
- [82] Hegazi NA, Sarhan MS, Fayez M, Patz S, Murphy BR, Ruppel S. Plant-fed versus chemicals-fed rhizobacteria of Lucerne: Plant-only teabags culture media not only increase culturability of rhizobacteria but also recover a previously uncultured *Lysobacter* sp., *Novosphingobium* sp. and *Pedobacter* sp. *PLoS ONE* 2017;12. e0180424.
- [83] Cavalcante VA, Dobreiner J. A new acid-tolerant nitrogen-fixing bacterium associated with sugarcane. *Plant Soil* 1988;108:23–31.
- [84] Saleh MY, Sarhan MS, Mourad EF, Hamza MA, Abbas MT, Othman AA, et al. A novel plant-based-sea water culture media for *in vitro* cultivation and *in situ* recovery of the halophyte microbiome. *J Adv Res* 2017;8:577–90.
- [85] Sarhan MS, Patz S, Hamza MA, Youssef HH, Mourad EF, Faye M, et al. G3 PhyloChip analysis confirms the promise of plant-based culture media for unlocking the composition and diversity of the maize root microbiome and for recovering unculturable candidate divisions/phyyla. *Microbes Environ* 2018;33:317–25.
- [86] Youssef HH, Hamza MA, Faye M, Mourad EF, Saleh MY, Sarhan MS, et al. Plant-based culture media: Efficiently support culturing rhizobacteria and correctly mirror their *in-situ* diversity. *J Adv Res* 2016;7:305–16.
- [87] Nour EH, Hamza MA, Faye M, Monib M, Ruppel S, Hegazi NA. The crude plant juices of desert plants as appropriate culture media for the cultivation of rhizospheric microorganisms. *J Adv Res* 2012;3:35–43.
- [88] Da Rocha UN, Andreote FD, de Azevedo JL, van Elsas JD, van Overbeek LS. Cultivation of hitherto-uncultured bacteria belonging to the Verrucomicrobia subdivision 1 from the potato (*Solanum tuberosum* L.) rhizosphere. *J Soils Sediments* 2010;10:326–39.
- [89] Garvie EI. *Leuconostoc oenos* sp. nov. *Microbiology* 1967;48:431–8.
- [90] Goto M, Kuwata H. *Rhizobacter daucus* gen. nov., sp. nov., the causal agent of carrot bacterial gall. *Int J Syst Evol Microbiol* 1988;38:233–9.
- [91] Tanaka Y, Tamaki H, Matsuzawa H, Nigaya M, Mori K, Kamagata Y. Microbial community analysis in the roots of aquatic plants and isolation of novel microbes including an organism of the candidate phylum OP10. *Microbes Environ* 2012;27:149–57.
- [92] Ali SM, Hamza MA, Amin G, Faye M, El-Tahan M, Monib M, et al. Production of biofertilizers using baker's yeast effluent and their application to wheat and barley grown in north Sinai deserts. *Arch Agron Soil Sci* 2005;51:589–604.
- [93] Thomsen MH. Complex media from processing of agricultural crops for microbial fermentation. *Appl Microbiol Biotechnol* 2005;68:598–606.
- [94] Lane D. 16S/23S rRNA sequencing. *Nucl Acid Tech Bacterial Systematics* 1991:115–75.
- [95] Klappenbach JA, Dunbar JM, Schmidt TM. rRNA operon copy number reflects ecological strategies of bacteria. *Appl Environ Microbiol* 2000;66:1328–33.
- [96] Schippers A, Neretin LN, Kallmeyer J, Ferdelman TG, Cragg BA, Parkes RJ, et al. Prokaryotic cells of the deep sub-seafloor biosphere identified as living bacteria. *Nature* 2005;433:861–4.
- [97] Stewart EJ. Growing unculturable bacteria. *J Bacteriol* 2012;194:4151–60.
- [98] Lutton EM, Schellevis R, Shanmuganathan A. Increased culturability of soil bacteria from Marcellus shale temperate forest in Pennsylvania. *J Student Res* 2013;2:36–42.
- [99] Murphy BR, Batke SP, Doohan FM, Hodgkinson TR. Media manipulations and the culture of beneficial fungal root endophytes. *Int J Biol* 2015;7:94–102.
- [100] Osman ZA, Elsanousi SM, Elsheikh EAE. Plant materials as probable growth promoters for certain fungi. *Euro J Exp Biol* 2012;2:1785–91.
- [101] Arulantham R, Pathmanathan S, Ravimannan N, Niranjan K. Alternative culture media for bacterial growth using different formulation of protein sources. *J Nat Prod Plant Resour* 2012;2:697–700.
- [102] Martyniuk S, Oron J. Use of potato extract broth for culturing root-nodule bacteria. *Polish J Microbiol* 2011;60:323–7.
- [103] Zhao H, Huang L, Xiao C, Liu J, Wei J, Gao X. Influence of culture media and environmental factors on mycelial growth and conidial production of *Diplocarpon mali*. *Lett Appl Microbiol* 2010;50:639–44.
- [104] Pathak M, Martirosyan D. Optimization of an effective growth medium for culturing probiotic bacteria for applications in strict vegetarian food products. *Funct Foods Health Dis* 2012;2:369–78.
- [105] Watson RJ, Heys R, Martin T, Savard M. *Sinorhizobium meliloti* cells require biotin and either cobalt or methionine for growth. *Appl Environ Microbiol* 2001;67:3767–70.
- [106] Sharma AR. Characterization of root stimulating bacterium and its root stimulating abilities; 2003.
- [107] Ong M, Ongkudon CM, Wong CM. Development of a semidefined growth medium for *Pedobacter cryoconitis* BG5 using statistical experimental design. *Prep Biochem Biotechnol* 2016;46:657–65.
- [108] Yin H. Detection methods for the genus *Lysobacter* and the species *Lysobacter enzymogenes*; 2010.
- [109] Nemerug DR, Knelman JE, Ferrenberg S, Bilinski T, Melbourne B, Jiang L, et al. Decreases in average bacterial community rRNA operon copy number during succession. *ISME J*. 2016;10:1147–56.
- [110] Roller BR, Stoddard SF, Schmidt TM. Exploiting rRNA operon copy number to investigate bacterial reproductive strategies. *Nat Microbiol* 2016;1:16160.
- [111] Armanhi JSL, de Souza RSC, Damasceno NB, de Araujo LM, Imperial J, Arruda P. A community-based culture collection for targeting novel plant growth-promoting bacteria from the sugarcane microbiome. *Front Plant Sci* 2017;8:2191.
- [112] Contaldo N, Satta E, Zambon Y, Paltrinieri S, Bertaccini A. Development and evaluation of different complex media for phytoplasma isolation and growth. *J Microbiol Methods* 2016;127:105–10.
- [113] Soro V, Dutton LC, Sprague SV, Nobbs AH, Ireland AJ, Sandy JR, et al. Axenic culture of a candidate division TM7 bacterium from the human oral cavity and biofilm interactions with other oral bacteria. *Appl Environ Microbiol* 2014;80:6480–9.
- [114] Luef B, Frischkorn KR, Wrighton KC, Holman HY, Birarda G, Thomas BC, et al. Diverse uncultivated ultra-small bacterial cells in groundwater. *Nat Commun* 2015;6:6372.
- [115] Baker BJ, Comolli LR, Dick GJ, Hauser LJ, Hyatt D, Dill BD, et al. Enigmatic, ultrasmall, uncultivated Archaea. *Proc Natl Acad Sci USA* 2010;107:8806–11.
- [116] Proctor CR, Besmer MD, Langenegger T, Beck K, Walser JC, Ackermann M, et al. Phylogenetic clustering of small low nucleic acid-content bacteria across diverse freshwater ecosystems. *ISME J* 2018;12:1344–59.
- [117] Konstantinidis KT, Tiedje JM. Trends between gene content and genome size in prokaryotic species with larger genomes. *Proc Natl Acad Sci USA* 2004;101:3160–5.
- [118] Dalia AB, Weiser JN. Minimization of bacterial size allows for complement evasion and is overcome by the agglutinating effect of antibody. *Cell Host Microbe* 2011;10:486–96.
- [119] White JF, Kingsley KL, Verma SK, Kowalski KP. Rhizophagy Cycle: an oxidative process in plants for nutrient extraction from symbiotic microbes. *Microorganisms* 2018;6.
- [120] Oshima K, Maejima K, Namba S. Genomic and evolutionary aspects of phytoplasmata. *Front Microbiol* 2013;4:230.



- [121] Youssef NH, Farag IF, Rinke C, Hallam SJ, Woyke T, Elshahed MS. *In Silico Analysis of the Metabolic Potential and Niche Specialization of Candidate Phylum "Latescibacteria" (WS3)*. PLoS ONE 2015;10. e0127499.
- [122] Hu ZY, Wang YZ, Im WT, Wang SY, Zhao GP, Zheng HJ, et al. *The first complete genome sequence of the class Fimbriimonadia in the phylum Armatimonadetes*. PLoS ONE 2014;9. e100794.
- [123] Tamaki H, Tanaka Y, Matsuzawa H, Muramatsu M, Meng XY, Hanada S, et al. *Armatimonas rosea* gen. nov., sp. nov., of a novel bacterial phylum, Armatimonadetes phyl. nov., formally called the candidate phylum OP10. *Int J Syst Evol Microbiol* 2011;61:1442–7.
- [124] Im WT, Hu ZY, Kim KH, Rhee SK, Meng H, Lee ST, et al. *Description of Fimbriimonas ginsengisoli* gen. nov., sp. nov. within the Fimbriimonadia class nov., of the phylum Armatimonadetes. *Antonie Van Leeuwenhoek* 2012;102:307–17.
- [125] Wertz JT, Kim E, Breznak JA, Schmidt TM, Rodrigues JL. *Genomic and physiological characterization of the Verrucomicrobia isolate Diplospheara colitermitum* gen. nov., sp. nov., reveals microaerophily and nitrogen fixation genes. *Appl Environ Microbiol* 2012;78:1544–55.



**Dr. Matthias Becker** is a botanist and microbiologist. After finishing his PhD on South African xerophytic plants in 2006, he was a lecturer for evolution and biodiversity of plants at Münster University in Germany. From 2008–2015 he conducted research on alpine plants and endophytic fungi at Massey University in New Zealand. From 2015 to date, he has worked for two German institutes (IGZ and JKI), where he focused on endophytic bacteria of crop plants. His research interest is to unravel complex interactions between plants of extreme environments (desert, alpine, agriculture) and plant-associated insects, fungi and bacteria (including plasmids and phages).



**Hend ElSawey** is a junior researcher at the Environmental Studies and Research Unit (ESRU), Faculty of Agriculture, Cairo University. Upon her graduation, with BSc degree in biotechnology, she started her post-graduate studies (MSc in Microbiology) on culturability of the plant microbiome. She is trained for molecular biology techniques at IGZ, Germany and her research program is co-supervised by Prof. Hegazi of Cairo university and Dr. Silke Ruppel of IGZ.



**Rahma Nemr** is a junior researcher at the Environmental Studies and Research Unit (ESRU), Faculty of Agriculture, Cairo University. Upon her graduation, with BSc degree in biotechnology, she started her post-graduate studies (MSc in Microbiology) on culturability of the plant microbiome. She is trained for molecular biology techniques at IGZ, Germany and her research program is co-supervised by Prof. Hegazi of Cairo university and Dr. Silke Ruppel of IGZ.



**Hassan-Sibroee A. Daanaa**, BSc, studied biotechnology at the Faculty of Agriculture, Cairo University, Egypt. He worked in the Environmental Studies Research Unit (ESRU) under the supervision of Prof. Hegazi. He focused on applications of plant-only-based culture media towards culturing and producing biomass of plant-growth-promoting bacteria. He successfully developed plant pellets for labor and cost-effective plant-based culture media preparation. In 2018, he started his PhD study in Evolutionary Genetics at the National Institute of Genetics, Mishima, Japan, after developing interest in studying microbial genome evolution.



**Elhussein F. Mourad** received his BSc in Biotechnology (2014) and MSc in Agricultural Microbiology (2018) from the Faculty of Agriculture, Cairo University, Egypt, investigating the culturability of microcolonies of plant endo-microbiome. He succeeded in developing new methods for discovery of new unculturable members of the plant endo-microbiome, while working under supervision of Prof. Nabil Hegazi and Prof. Mohamed Fayeze at the Environmental Studies and Research Unit (ESRU) at Cairo University, Egypt. He had been working at ESRU since 2011 as an undergraduate trainee, and from 2014 as a research assistant. Currently, he is working on mathematical modelling of plant diseases.



**Mohamed S. Sarhan** is a PhD student in Microbiology at Cairo University. He received BSc in biotechnology (2013) and MSc in Microbiology (2017) from Cairo University. He also obtained master's diploma in Integrated Pest Management (2017) from the Mediterranean Agronomic Institute of Bari (CIHEAM-Bari), Italy. He joined Prof. Nabil Hegazi research group in 2014, at Cairo University, and worked under close supervision of Dr. Silke Ruppel of the Leibniz-Institute of Vegetable and Ornamental Crops (IGZ), Germany, with support of Alexander von Humboldt Foundation, Germany. His PhD research focuses on plant-microbiome exploration and manipulation, with particular emphasis on candidate phyla and abiotic-stresses.



**Dr. Mervat A. Hamza** is a senior researcher at the Environmental Studies and Research Unit (ESRU), Faculty of Agriculture, Cairo University. Her research focused on the ecology and culturability of the plant microbiome. Joined the group of Prof. Hegazi, she engaged in pilot production of biofertilizers for application in desert farms, participated in several of the ongoing the research projects, and co-authored several international publications.



**Dr. Hanan H. Youssef** is a senior researcher at the Environmental Studies and Research Unit (ESRU), Faculty of Agriculture, Cairo University. Her research focused on the ecology and culturability of the plant microbiome. Joined the group of Prof. Hegazi, she engaged in pilot production of biofertilizers for application in desert farms, participated in several of the ongoing the research projects, and co-authored several international publications.



**Sascha Patz** is a PhD student at the University of Tuebingen in the research group "Algorithms in Bioinformatics" of Prof. Dr. Huson. During his diploma thesis at the Martin-Luther University and Leibniz Institute of Plant Biochemistry Halle (Saale), afterwards as Leonardo da Vinci fellow at the Eötvös Loránd University (Budapest), and at the Leibniz Institute of Vegetable and Ornamental Crops (Grossbeeren) he studied the effect of microbial inoculants on plants. Nowadays his research topics comprise comparative genomics and metagenomics related to beneficial crop-microbe interaction and to organic wastewater bioreactor microbiomes for carbon recovery together with Prof. Dr. Ir. Angenent.



workmanship.

**Ahmed T. Morsi** is a motivated, driven, team-player, with a passion for the intersection of science and art. He graduated from Cairo University with BSc degree in biotechnology, interfacing with genetics, microbiology, and biochemistry. While studying biology, he discovered that he was really interested in the seamless ways that these complicated systems flowed together. He found that, through graphic design, he can bring together individual components into beautiful pieces. While his expertise has been primarily in Adobe Photoshop, Illustrator, InDesign and Aftereffects, he is constantly looking to gain new skills and improve the quality of his



**Mohamed Fayeze** is an Emeritus Professor of Microbiology, Faculty of Agriculture, Cairo University. He obtained his BSc and MSc from Cairo University, and his PhD from KUL, Belgium. His research field focused on various aspects of the plant-microbe interactions. Along the years, his research was very much involved in the ecology and culturability of microbiota associated to plant covers especially of stressed environments. He is having more than 100 publications in a number of local, regional and international journals. He acted as head of the department of microbiology at Cairo University and awarded the state prize in agricultural sciences.



**Mohamed R. Abdelfadeel** is a junior researcher at the Environmental Studies and Research Unit (ESRU), Faculty of Agriculture, Cairo University. Upon his graduation, with BSc degree in biotechnology, he started his post-graduate studies (MSc in Microbiology) on long-term preservation of the plant microbiomes. He is trained for bioinformatics and molecular biology techniques at in cooperation with IGZ, Germany. His research program is co-supervised by Prof. Hegazi of Cairo university and Dr. Silke Ruppel of IGZ.



**Silke Ruppel** is acting as a Head of Research group 2.2 at the Leibniz Institute of Vegetable and Ornamental Crops, IGZ, and Private docent of Microbial Ecology, Martin-Luther University Halle/Wittenberg, Faculty of Agronomy. Her Main research interest is the functional interaction between the plant and its microbiome, native bacterial diversity and selected bacterial strains significantly impact on plant nutrition and vitality, complex omics techniques for functional interactions from the plant and bacterial point of view, the risk and pros of diverse bacterial community compositions in respect of potential human pathogenic bacteria and probiotics.



**Mohammed Abbas** obtained his PhD in Microbial ecology from Agricultural Microbiology Department, Faculty of Agriculture, Cairo University (2000). He acted as a senior researcher at Environmental Studies and Research Unit, Faculty of Agriculture, Cairo University (ESRU, 1991 - 2014). In 2014, he joined the academic staff of the Faculty of Agriculture and Natural Resources, Aswan University. His research focused on plant-soil-microbe interactions, organic farming and biofertilization for the development of desert communities and agriculture. Since 1991, he was engaged in several of environmental projects and has published More than 22 articles in international journals.



**Nabil Hegazi** is an Emeritus Professor of Environmental Microbiology, Faculty of Agriculture, Cairo University. He obtained his BSc and MSc from Cairo University, and his joint PhD from Royal Veterinary and Agricultural University, Copenhagen and the Agricultural University of Prague. Prof. Hegazi is Alexander von Humboldt fellow, and keeps very intensive scientific cooperation with international research groups in Germany and other European countries. He devoted his long life researching the plant-microbe interactions under various environmental conditions. His research group is known for their scientific production of more than 150 international publications and 10 books.